



ACROBAT

Flip Bolt Mortice Lock

www.carbine.com.au/acrobat
www.carbine.co.nz/acrobat



CARBINE ACROBAT

EXPERIENCE OUR MOST **VERSATILE** RANGE YET



ABOUT CARBINE

Carbine is a high-end brand of commercial and residential locks that push the boundaries of locking technology and solve security problems that have dogged the industry for years.

Carbine locks are engineered for high-security and end-user convenience. Unlike other brands, they're also designed for fast, no-fuss installation.

That's the Carbine difference. It's why our locks are highly regarded among reputable locksmiths and often rapidly adopted in both residential and commercial situations.

About Carbine Acrobat

- + *Introducing Carbine Acrobat*
- + *Internal Deadlock Model*
- + *Holdback Model*
- + *Interchangeable Locking Bolts*
- + *Multiple Product Configurations*
- + *Egress handle and concealed short lever*
- + *Latching Strike*

Type of Door

- + *Aluminium*
- + *Timber*
- + *Glass*
- + *Find the right configuration*

04
06
07
08
10
11
12

14
16
18
21

THE CARBINE ACROBAT FLIP BOLT MORTICE LOCK

Introducing one of the *world's strongest and most versatile flip bolt mortice locks* designed for securing commercial and residential properties.

What is Carbine Acrobat?

The Carbine Acrobat is a flip bolt mortice lock that offers multiple configurations to suit aluminium and timber sliding or hinged doors, and glass hinged doors.

Designed to suit the flexibility of any business with its versatile and interchangeable configurations.

The two main model options are an Internal Deadlock and a Hold Back version. Both models allow for multiple internal configurations such as a double cylinder, turn knob, escape turn knob, short lever, and an egress handle.

The Carbine Acrobat has an easy to install mounting system, providing *increased durability* and more *accurate* and *easier* installation.

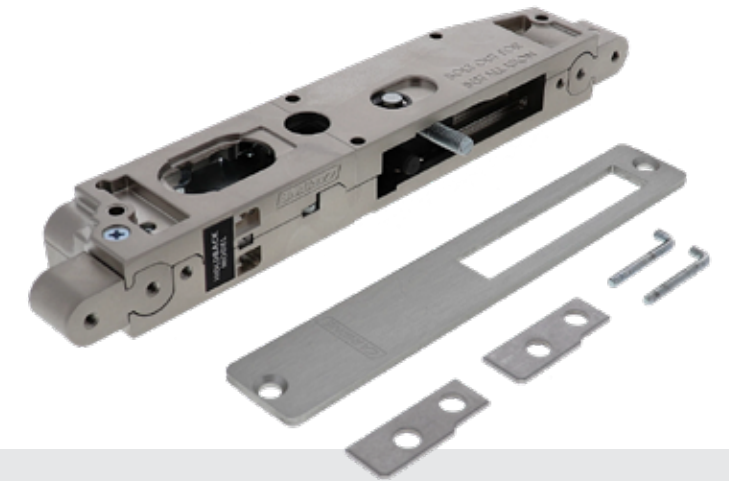


Hold Back Model

The hold back model when used with the special cam and short lever can lock the locking bolt in the retracted position. This makes it ideal for egress applications as the locking bolt can never be internally locked in the projected position and emergency egress is always available.

Internal Deadlock Model

The internal deadlock model when used with the rabbit cam and short lever can internally lock the locking bolt in the projected or door locked position.



Special Cam



The Internal Deadlock and Hold Back model take a standard oval 570 style cylinder with rabbit and special cam respectively, which allows the integration with existing mechanical or electromechanical master key systems such as EVVA 4KS or EKA CyberLock.

To simplify the installation of the cylinder, the Carbine Acrobat uses a non-threaded retaining pin for the cylinder, meaning no chance of damaging or losing a screw on install.



INTERNAL DEADLOCK MODEL

Advantages

- + When used with the concealed short lever (CFB-CSL), it provides internal deadlocking functionality (operated by an internal key). This provides increased security when needed.
- + Can be used with an egress handle giving full Building Code of Australia and NCC Egress compliance.
- + Multiple product configuration options available to suit customer application.
- + **Interchangeable Stainless-Steel Locking Bolts**
Reduces the number of models to stock that is required by an installer. The same lock body can be used on hinged and sliding doors, by simply installing the required locking bolt. Chamfered bolt aids alignment of door with frame when locking making for easier and smoother operation.
- + **Additional Mounting Points for Damaged or New Doors**
If metal hollow stile doors are damaged from forced entry or repeated impact and consequently mounting screw heads are pushed through the metal, then secondary mounting points can be used. For new installations, if all four mounting points are used these increases the holding force of the lock. On sliding doors, when used with the latching strike and the face plate kit, this will provide even greater holding strength and damage protection.
- + **1mm adhesive packers**
When door extrusions of 2mm and below in thickness, installing these packers will bring the cover plate face more in line with the face of the extrusion, thus providing a more aesthetically pleasing installation.

Anti Saw Hardened Pin in Locking Bolt

- + Increased security

Bolt Packers

- + Allows fine adjustment of locking on sliding doors. This increases the bolt throw when used with the tapered bolt on hinged doors.

Can be installed with:

- + Double cylinder (2 x COV-SC6R)
- + Oval turn snib (CFB-OTS)
- + Escape turn snib (CFB-OES)
- + Concealed short lever (CFB-CSL)
- + Egress Handle (CFB-EH)

Types of door installation:

- + Aluminium (*min. 28mm internal width, 50mm max. external width*)
- + Timber (*32-50mm width*)
- + Glass Doors (*requires optional patch kit*)

Patch kit mounting inserts (CFB-PF) required when fitting to a glass patch fitting or rear fixing aluminum door.



HOLD BACK MODEL

Advantages

- + When used with the concealed short lever (CFB-CSL), the locking bolt can be locked by an internal key in the retracted position. This feature stops unauthorised users tampering or operating the lock such as a commercial premises or retail store.
- + Multiple product configuration options available to suit customer application.
- + **Interchangeable Stainless-Steel Locking Bolts**
Reduces the number of models to stock that is required by an installer. The same lock body can be used on hinged and sliding aluminium doors, by simply installing the required locking bolt. Chamfered bolt aids alignment of door with frame when locking making for easier and smoother operation.
- + **Additional Mounting Points for Damaged or New Doors**
If metal hollow stile doors are damaged from forced entry or repeated impact and consequently mounting screw heads are pushed through the metal, then secondary mounting points can be used. For new installations, if all four mounting points are used these increases the holding force of the lock. On sliding doors, when used with the latching strike and the face plate kit, this will provide even greater holding strength and damage protection.
- + **1mm adhesive packers**
When door extrusions of 2mm and below in thickness, installing these packers will bring the cover plate face more in line with the face of the extrusion, thus providing a more aesthetically pleasing installation.

Anti Saw Hardened Pin in Locking Bolt

- + Increased security

Bolt Packers

- + Allows fine adjustment of locking on sliding doors. This increases the bolt throw when used with the tapered bolt on hinged doors.

Can be installed with:

- + Double cylinder (2 x COV-SC6R)
- + Oval turn snib (CFB-OTS)
- + Escape turn snib (CFB-OES)
- + Concealed short lever (CFB-CSL)
- + Egress Handle (CFB-EH)

Types of door installation:

- + Aluminium (*min. 28mm internal width, 50mm max. external width*)
- + Timber (*32-50mm width*)
- + Glass Doors (*requires optional patch kit*)

Patch kit mounting inserts (CFB-PF) required when fitting to a glass patch fitting or rear fixing aluminum door.

CHANGE YOUR LOCKING BOLTS

INTERCHANGEABLE LOCKING BOLT

The *interchangeable* stainless steel locking bolts means installers need only carry the *two lock models* so they can get the *job done fast*.

Manufactured to precision with a chamfer design, the three bolt options include a unique 22mm tapered bolt, 28mm hook bolt, and a longer 35mm hook bolt. With a nylon vibration resistant insert, the three bolt types can be used on both the Hold Back model or the Internal Deadlock model.



22mm Taper Bolt

28mm Hook Bolt

35mm Hook Bolt



Bolt Packers (if required)

There is also an option to install packers to increase bolt depth and fine tune hook locking.

BOLT TYPE	PRODUCT CODE	TYPE OF DOOR	FEATURE
22mm Taper Bolt SS	CFB-141A	Hinged Aluminium Door Hinged Timber Door Hinged Glass Door	Chamfered bolt front edge aids alignment of door with frame when locking making for easier and smoother operation.
28mm Hook Bolt Short SS	CFB-142A	Sliding Aluminium Door Sliding Timber Door	Chamfered bolt front edge aids alignment when latching into the Latching Strike – CLS-FAB.
35mm Hook Bolt Long SS	CFB-143A	Sliding Aluminium Door Sliding Timber Door	Chamfered bolt front edge aids alignment when latching into the Latching Strike – CLS-FAB.

ACROBAT

Flip Bolt Mortice Lock

One of the world's strongest and most versatile flip bolt mortice locks.

CARBINE ACROBAT

MULTIPLE PRODUCT CONFIGURATIONS

Ergonomically designed with a brushed stainless-steel look to seamlessly integrate into existing door hardware or new installations, the Carbine Acrobat provides a plethora of fitting options, all in the one model.

Escutcheons

To match the aesthetic design, the Carbine Acrobat contains a high-quality stainless-steel escutcheon covering the oval cylinder with a rubber insert acting as a clamp for strength.

Function Description	External Side	Internal Side	Escutcheons	Feature
Double Cylinder	COV-SC6R	COV-SC6R	2 x CFB-OCEP	Key inside and out for added security.
Cylinder & Oval Turn snib	COV-SC6R	CFB-OTS	2 x CFB-OCEP	Ergonomic snib with left or right hand configuration in the one product with a visual indicator lets users know if the door is locked or unlocked.
Cylinder & Escape Turn snib	COV-SC6R	CFB-OES	2 x CFB-OCEP	Left or right hand configuration in the one product with a visual indicator lets users know if the door is locked or unlocked.
Cylinder & Concealed Short lever	COV-SC6R	COV-SC6R + CFB-CSL	CFB-OCEP	Providing internal deadlock (CFB-D model) or hold back (CFB-HB model) capability.
Cylinder & Egress handle	COV-SC6R	CFB-EH	CFB-OCEP	Suitable for emergency exit doors.



Double Cylinder



Cylinder & Oval Turn Snib



Cylinder & Escape Turn Snib



Cylinder & Concealed Short Lever



Egress Handle



Right-hand Configuration

Left-hand Configuration

Concealed Short Lever
CFB-CSL

Provides internal deadlocking when used with CFB-D model lock and hold back when used with CFB-HB model lock.

Features

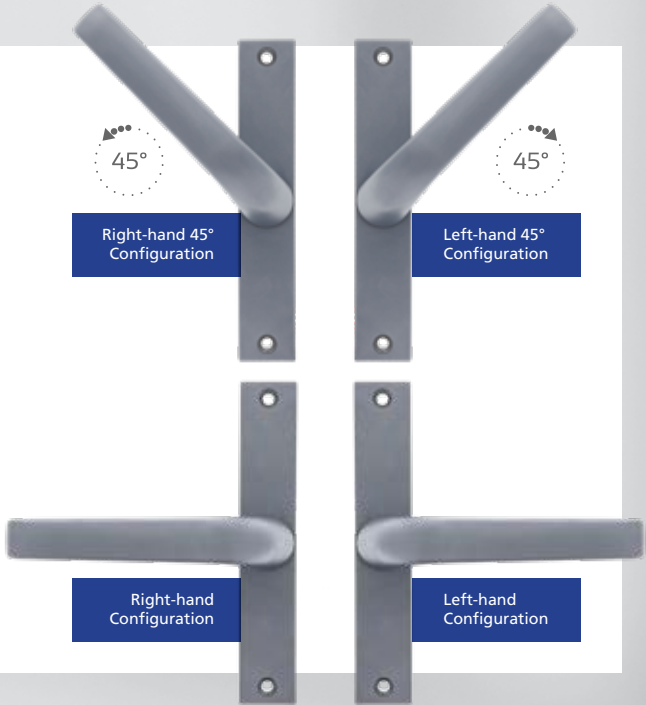
- + Innovative single sided, surface mounted, self aligning, easy install concealed mounting system for cleaner, easier and more accurate installation.
- + Quick change lever handing; the same Concealed Short Lever works on left and right handed doors.
- + Suits Metal hollow stile doors. Door width 37-50mm.
- + Provides increased durability, security and improved aesthetics.
- + Modern brushed stainless steel look.
- + Lever can only be removed when door is open and cylinder removed, providing a higher lever of security.

Egress Handle
CFB-EH

Suitable for emergency exit doors.

Features

- + Innovative single sided, surface mounted, self aligning, and easy install mounting system. Provides increased durability and more accurate and easier alignment with lock.
- + Quick change lever handing; the same Egress Handle works on left and right handed doors with four configurations in the one product.
- + Ergonomically Great Feel, Full Size Lever, Ultra Light Action.
- + Comfort Feel Handle Insert.
- + Suits metal hollow stile doors. Door width 37-50mm.
- + Modern Brushed Stainless Steel Look.
- + Covers existing oval cylinder hole cutout in door.



Right-hand 45° Configuration

Left-hand 45° Configuration

Right-hand Configuration

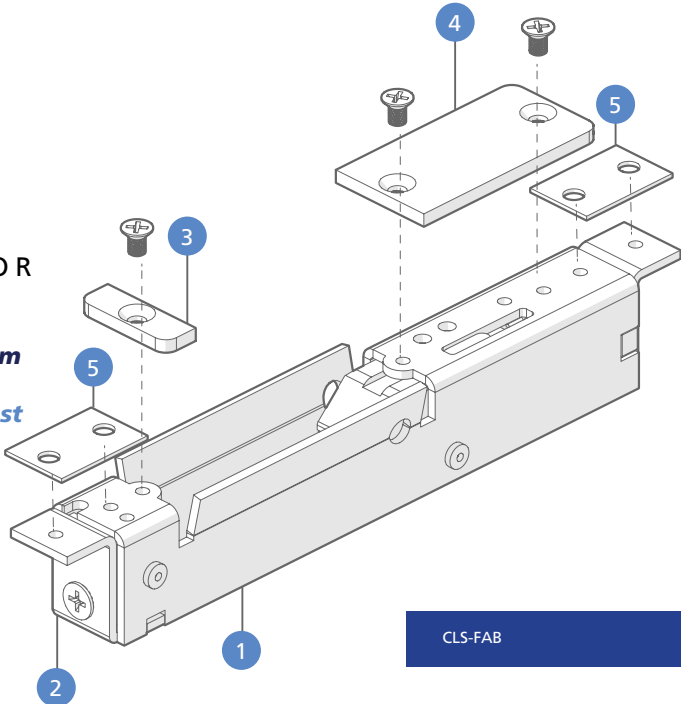
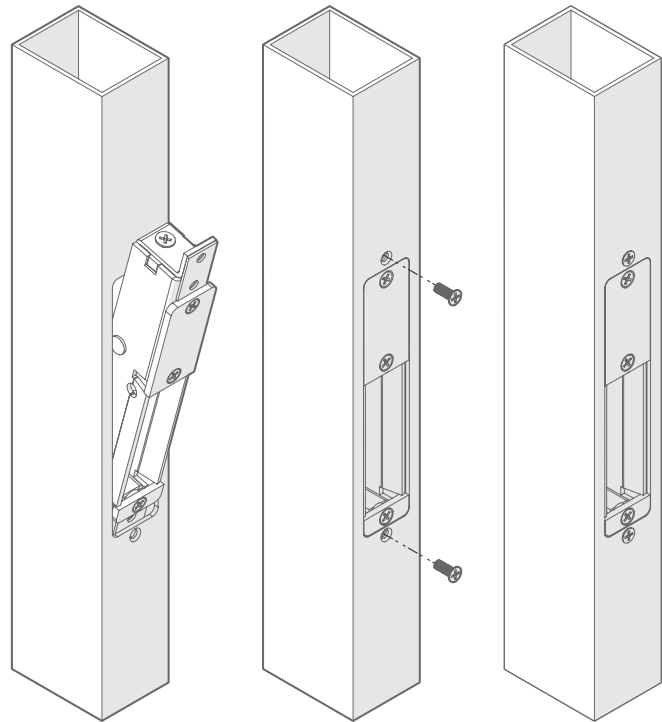
Left-hand Configuration

CARBINE ACROBAT

LATCHING STRIKE

SLIDING ALUMINIUM AND TIMBER DOOR

The latching strike with a wide mouth opening for improved locking avoids the bolt damaging the strike from slamming, and to also compensate for misaligned doors, making the Carbine Acrobat most suitable for the toughest high use environments.

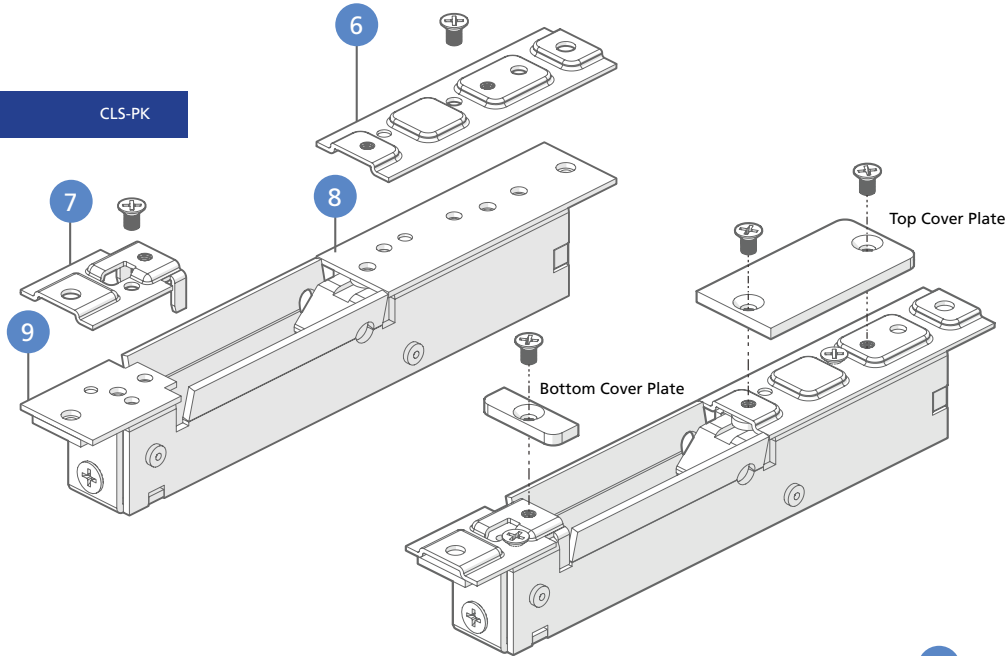


Features

- + For hollow metal doors, the Carbine Acrobat locks and latching strike come with additional mounting points for increased holding strength.
- + Greater holding strength and damage protection.
- + Tapered locking bolt entry point.

ITEM NO.	DESCRIPTION
1	Latching Strike
2	Corner Plate
3	Bottom Cover Plate
4	Top Cover Plate
5	Plaster Packer

CLS-PK



LATCHING STRIKE PACKER KIT

Sold Separately

Features

- + Innovative design allows for three different spacings (1.5mm, 3mm & 4.5mm).
- + Strong steel construction.

ITEM NO.	DESCRIPTION
6	Top Packer 3.0mm (Metal)
7	Bottom Packer 3.0mm (Metal)
8	Top Packer 1.5mm (Metal)
9	Bottom Packer 1.5mm (Metal)

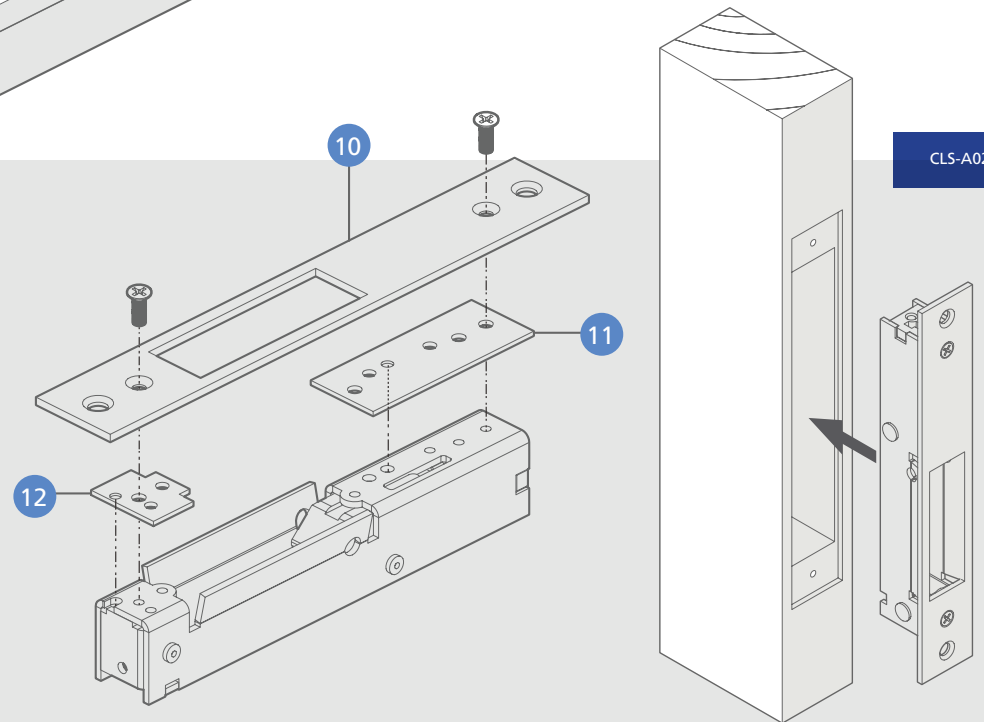
LATCHING STRIKE SAVER/TIMBER PLATE

A brushed stainless-steel face plate kit that can be used with the latching strike.

Features

- + Suitable for installing the latching strike to timber frame.
- + Cover damaged metal extrusion frames.

ITEM NO.	DESCRIPTION
10	Strike Saver Plate
11	Top Packer 1.5mm (Timber)
12	Bottom Packer 1.5mm (Timber)



CLS-A02



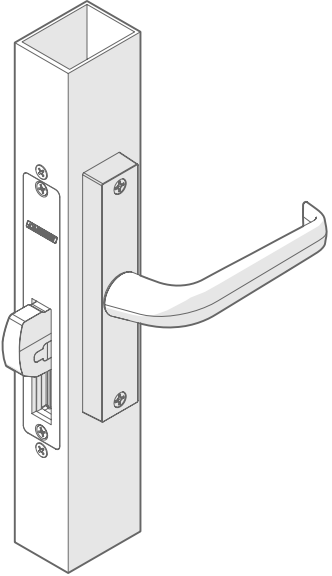
WHAT ARE YOU TRYING TO LOCK?

ACROBAT FOR ALUMINIUM DOORS

The Carbine Acrobat can be installed on metal hollow stile doors with a minimum internal width of 28mm to max external width of 50mm, making it perfect for all commercial and residential applications such as shop fronts, sliding doors, strata buildings including main entrance doors, office doors, entry and exit doors, showrooms and much more.

PRODUCT CONFIGURATIONS

Door Type	Hinged	✓
	Sliding	✓
Bolt Type	Tapered	✓
	Hook Short	✓ ^
	Hook Long	✓ ^
Functions	Key Outside, Short Lever and Key inside - Internal Deadlock	✓
	Key Outside, Short Lever and Key inside - Holdback	✓
	Key Outside, Egress Lever inside	✓
	Key outside, Oval Turn Snib inside	✓
	Key outside, Escape Turn inside	✓
	Key outside, Key inside (Basic Deadlock)	✓
Fitting Kits & Optional Extras	Timber Face Plate Kit (CFB-SP)	✓ *
	Latching Strike (CLS-FAB)	✓
	Latching Strike Packer Kit (CLS-PK) for different spacings	✓
	Latching Strike Timber Face Plate Kit (CLS-A02)	✓ •
	Patch Kit Mounting Inserts (CFB-PF)	✓



Note:

- Can be used to repair damaged door frame.
- * Can be used to repair damaged door.
- ^ Sliding doors need hook bolts (short or long) and require the Latching Strike (CLS-FAB) to be installed.





WHAT ARE YOU TRYING TO LOCK?

ACROBAT FOR TIMBER DOORS

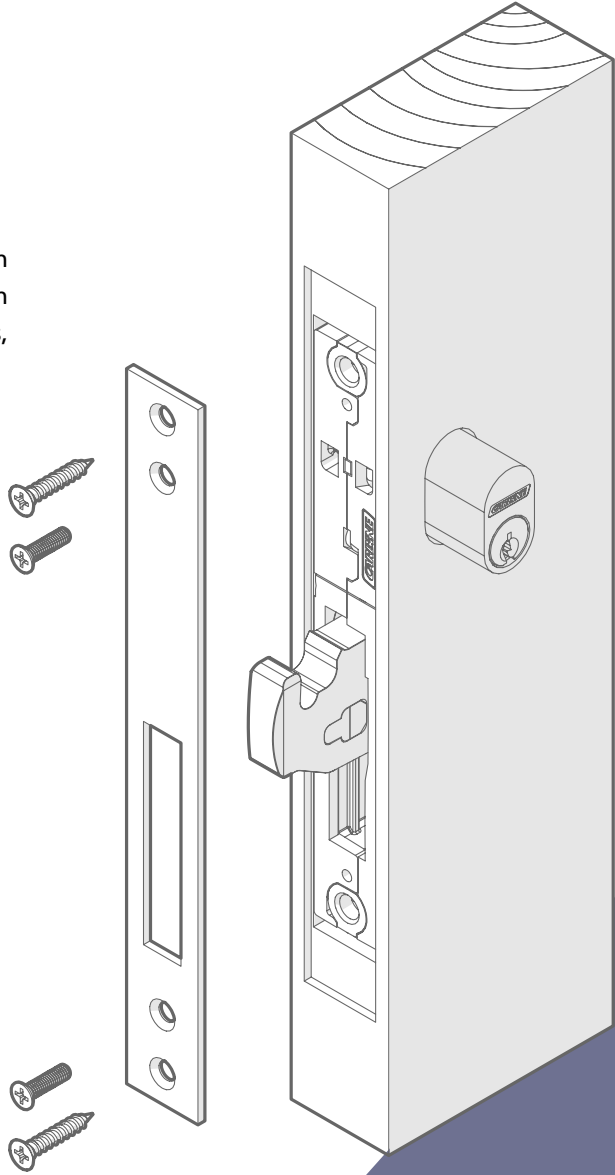
The Carbine Acrobat can be installed on timber doors with a minimum internal width of 32mm to max external width of 50mm, making it perfect for retail doors, interior doors, showrooms, residential properties and much more.

PRODUCT CONFIGURATIONS

Door Type	Hinged	✓ +
	Sliding	✓ #
Bolt Type	Tapered	✓
	Hook Short	✓ #
	Hook Long	✓ #
Functions	Key outside, Oval Turn Snib inside	✓
	Key outside, Escape Turn inside	✓
	Key outside, Key inside (Basic Deadlock)	✓
Fitting Kits & Optional Extras	Timber Face Plate Kit (CFB-SP)	✓ #
	Latching Strike (CLS-FAB)	✓ #
	Latching Strike Packer Kit (CLS-PK) for different spacings	✓
	Latching Strike Timber Face Plate Kit (CLS-A02)	✓ #

Note:
+ Hinged Timber doors need the Timber Face Plate Kit (CFB-SP).

Sliding Timber doors need the Timber Face Plate Kit (CFB-SP), Latching Strike (CLS-FAB), and the Sliding Timber Face Plate Kit (CLS-A02).





WHAT ARE YOU TRYING TO LOCK?

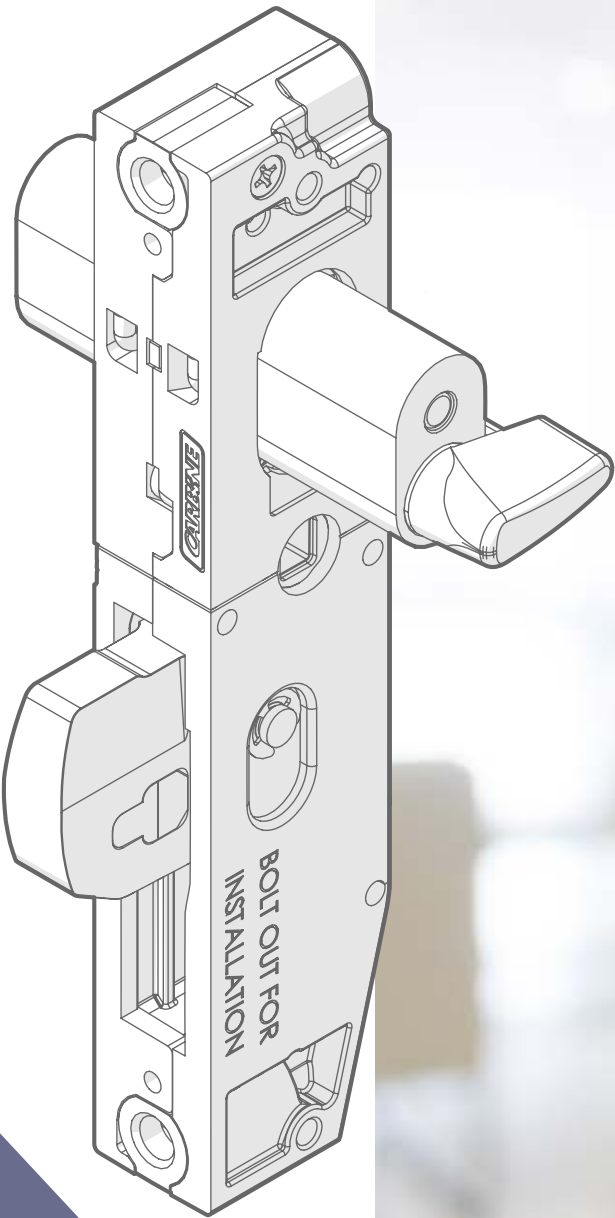
ACROBAT FOR GLASS DOORS

The Carbine Acrobat can be installed on glass doors with the optional patch kit, making it perfect for entry doors, interior doors, office doors, showrooms, and much more.

PRODUCT CONFIGURATIONS

Door Type	Hinged	✓
Bolt Type	Tapered	✓
Functions	Key outside, Oval Turn Snib inside	✓
	Key outside, Escape Turn inside	✓
	Key outside, Key inside (Basic Deadlock)	✓
Fitting Kits & Optional Extras	Patch Kit Mounting Inserts (CFB-PF)	✓ ~

~ Patch kit mounting inserts (CFB-PF) required when fitting to a glass patch fitting.





WHAT ARE YOU TRYING TO LOCK?

FIND THE RIGHT
ACROBAT INSTALLATION



PRODUCT CONFIGURATIONS



Aluminium



Timber



Glass

Door Type	Hinged	✓	✓ +	✓
	Sliding	✓	✓ #	✗
Bolt Type	Tapered	✓	✓	✓
	Hook Short	✓ ^	✓ ^	✗
	Hook Long	✓ ^	✓ ^	✗
Functions	Key Outside, Short Lever and Key inside - Internal Deadlock	✓	✗	✗
	Key Outside, Short Lever and Key inside - Holdback	✓	✗	✗
	Key Outside, Egress Lever inside	✓	✗	✗
	Key outside, Oval Turn Snib inside	✓	✓	✓
	Key outside, Escape Turn inside	✓	✓	✓
	Key outside, Key inside (Basic Deadlock)	✓	✓	✓
Fitting Kits & Optional Extras	Timber Face Plate Kit (CFB-SP)	✓ *	✓ #	✗
	Latching Strike (CLS-FAB)	✓	✓ #	✗
	Latching Strike Packer Kit (CLS-PK) for different spacings	✓	✓	✗
	Latching Strike Timber Face Plate Kit (CLS-A02)	✓ •	✓ #	✗
	Patch Kit Mounting Inserts (CFB-PF)	✓	✗	✓ ~

Note:

+ Hinged Timber doors need the Timber Face Plate Kit (CFB-SP).

^ Sliding doors need hook bolts (short or long) and require the Latching Strike (CLS-FAB) to be installed.

• Can be used to repair damaged door frame.

Sliding Timber doors need the Timber Face Plate Kit (CFB-SP), Latching Strike (CLS-FAB), and the Sliding Timber Face Plate Kit (CLS-A02).

* Can be used to repair damaged door.

~ Patch kit mounting inserts (CFB-PF) required when fitting to a glass patch fitting.



Innovation in Lock Design Since 2002

All Carbine locks are developed in collaboration with some of Australia's most talented and visionary locksmiths. It's your guarantee of superior quality, versatility and ease-of-installation.

1300 308 745

sales@carbine.com.au

+64 9 368 4802

sales@carbine.co.nz

www.carbine.com.au/acrobat
www.carbine.co.nz/acrobat